

CITY OF KELOWNA

BYLAW NO. 9233

Road Closure and Removal of Highway Dedication Bylaw **Union Road**

**A bylaw pursuant to Section 40 of the Community Charter
to authorize the City to permanently close and remove the
highway dedication of a portion of highway on Union Road**

NOW THEREFORE, the Municipal Council of the City of Kelowna, in open meeting assembled, hereby enacts as follows:

1. That those portions of highway attached as Schedule "A", shown in bold black as Parcel A (comprising 0.364 ha), Parcel B (comprising 0.196 ha) and Parcel C (comprising 1 m²) on the Reference Plan prepared by Thomas E. Ferguson, B.C.L.S., and completed on the 28th day of April, 2004, is hereby stopped up and closed to traffic and the highway dedication removed.
2. The Mayor and City Clerk of the City of Kelowna are hereby authorized to execute such conveyances, titles, survey plans, forms and other documents on behalf of the said City as may be necessary for the purposes aforesaid and to affix the Corporate Seal of the said City thereto.

Read a first, second and third time by the Municipal Council this 17th day of May, 2004.

Adopted by the Municipal Council of the City of Kelowna this ____ day of May, 2004.

Mayor

City Clerk

**REFERENCE PLAN TO ACCOMPANY CITY OF KELOWNA
ROAD CLOSURE AND REMOVAL OF HIGHWAY DEDICATION
BY-LAW NO. 9233, OF PART OF ROAD WITHIN
SECTIONS 4, 5 AND 9, TOWNSHIP 23, O.D.Y.D.**

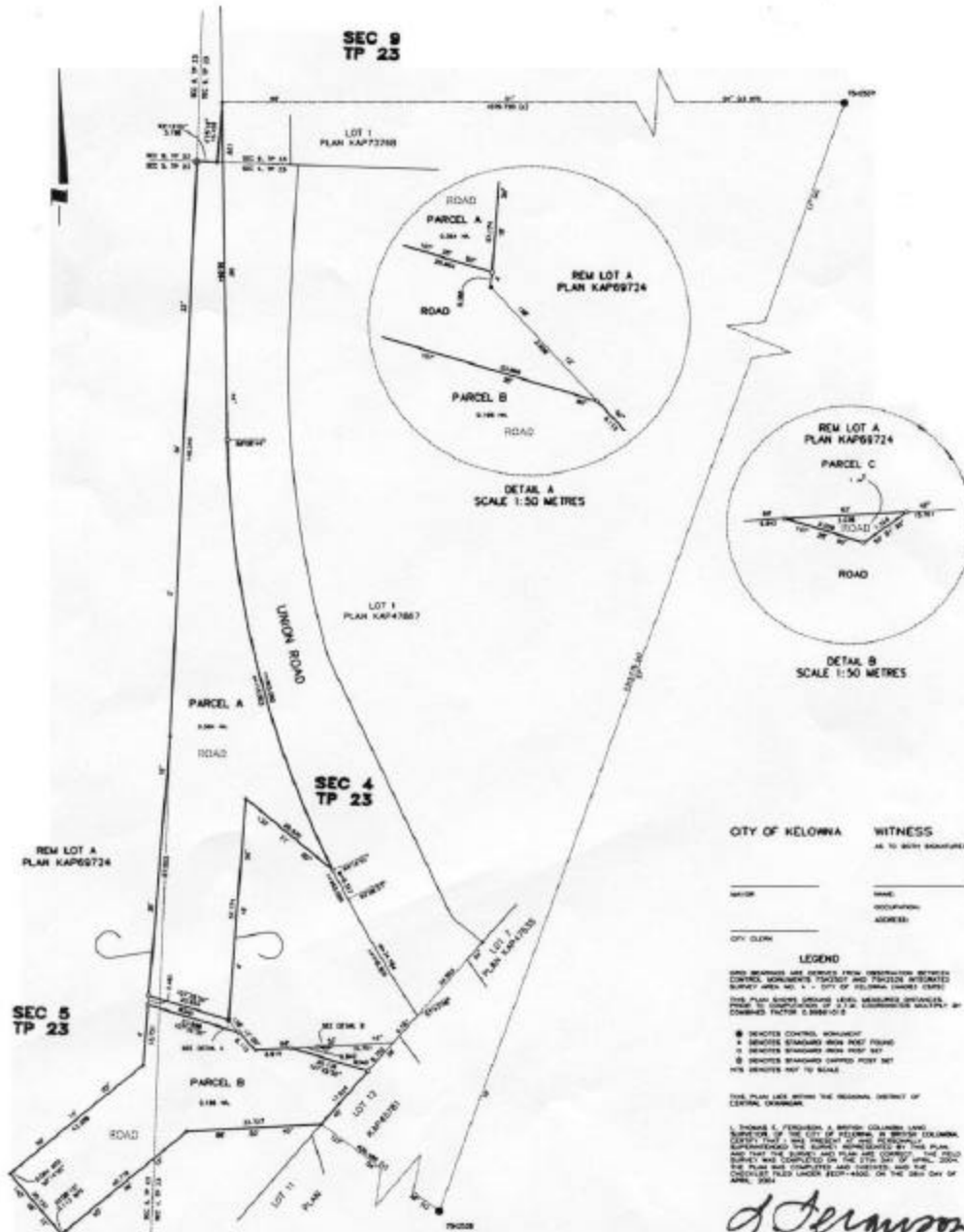
PLAN KAP
1:500 METRES LAND TITLE OFFICE OF KANICOP, B.C.

PURSUANT TO SECTION 40 OF THE COMMUNITY CHARTER

B.C.S.S. 82E.093

SCALE: 1:500 METRES

15 0 15 30 45 60 METRES



CITY OF KELOWNA WITNESS
AS TO MY SIGNATURE

NAME: _____
ADDRESS: _____

CITY CLERK: _____

LEGEND

THIS PLAN AND THE SURVEY FROM OBSERVATIONS BETWEEN
CORNERS BOUNDARY POINTS AND 7502128 BOUNDARY
SURVEY AREA NO. 1 - CITY OF KELOWNA (2001)

THIS PLAN SHOWS THE SURVEY FROM OBSERVATIONS
FOR THE CLOSURE OF THE ROAD WITHIN THE CITY OF
KELOWNA (2001)

● INDICATES CONTROL MONUMENT
+ INDICATES STAKEHOLDERS FROM THE FIELD
x INDICATES STAKEHOLDERS FROM THE FIELD
○ INDICATES STAKEHOLDERS FROM THE FIELD
○ INDICATES STAKEHOLDERS FROM THE FIELD
○ INDICATES STAKEHOLDERS FROM THE FIELD

THIS PLAN AND THE SURVEY FROM OBSERVATIONS BETWEEN
CORNERS BOUNDARY POINTS AND 7502128 BOUNDARY
SURVEY AREA NO. 1 - CITY OF KELOWNA (2001)

THIS PLAN AND THE SURVEY FROM OBSERVATIONS BETWEEN
CORNERS BOUNDARY POINTS AND 7502128 BOUNDARY
SURVEY AREA NO. 1 - CITY OF KELOWNA (2001)

THIS PLAN AND THE SURVEY FROM OBSERVATIONS BETWEEN
CORNERS BOUNDARY POINTS AND 7502128 BOUNDARY
SURVEY AREA NO. 1 - CITY OF KELOWNA (2001)

THIS PLAN AND THE SURVEY FROM OBSERVATIONS BETWEEN
CORNERS BOUNDARY POINTS AND 7502128 BOUNDARY
SURVEY AREA NO. 1 - CITY OF KELOWNA (2001)

THIS PLAN AND THE SURVEY FROM OBSERVATIONS BETWEEN
CORNERS BOUNDARY POINTS AND 7502128 BOUNDARY
SURVEY AREA NO. 1 - CITY OF KELOWNA (2001)

THIS PLAN AND THE SURVEY FROM OBSERVATIONS BETWEEN
CORNERS BOUNDARY POINTS AND 7502128 BOUNDARY
SURVEY AREA NO. 1 - CITY OF KELOWNA (2001)

THIS PLAN AND THE SURVEY FROM OBSERVATIONS BETWEEN
CORNERS BOUNDARY POINTS AND 7502128 BOUNDARY
SURVEY AREA NO. 1 - CITY OF KELOWNA (2001)

THIS PLAN AND THE SURVEY FROM OBSERVATIONS BETWEEN
CORNERS BOUNDARY POINTS AND 7502128 BOUNDARY
SURVEY AREA NO. 1 - CITY OF KELOWNA (2001)

PARCEL NO.	AREA (SQ. METRES)	AREA (ACRES)
PARCEL A	0.041 HECTARES	0.010 ACRES
PARCEL B	0.041 HECTARES	0.010 ACRES
PARCEL C	0.041 HECTARES	0.010 ACRES

T.E. Ferguson Land Surveying Ltd.
B.C. AND OTHER LAND SURVEYORS
111-101 BROADWAY KELOWNA, B.C.
PHONE: (250) 862-2111
FAX: (250) 862-2111

JOB NO. 14620-1B-RC

111-101 BROADWAY KELOWNA, B.C. V1Y 1A1